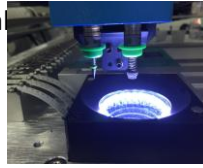




# CHMT48VB PICK AND PLACE MACHINE

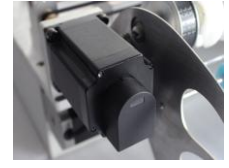
- \* Total 58 feeders (Left and right), put more material
- \* High speed mounting with double Vision system
- \* Axis Closed-loop control
- \* Embedded Linux system
- \* Industry level high reliable mainboard
- \* PC in build, no need external PC
- \* High quality Juki Nozzles
- \* Multi PCB assembly support
- \* All-in-one Machine



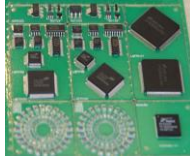
CCD vision camera



Touch screen control



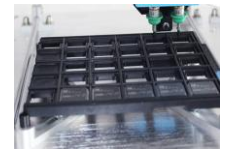
closed-loop control



Different kinds of material



Pull pin auto reset



Support IC tray



Model	CHM-T48VB
XYZ Axis travel	420mm(X)×460mm(Y)×15mm(Z)
PCB max size	345mm(L)×355mm(W)
Support components	LED, 0402-5050, SOP, QFN etc.
Mounting speed	Without vision:6000cph; With Vision:4000cph
Precision	±0.025mm
Placement head	2 heads
Feeding system	58pcs feeders; 14pcs bulk IC; User-defined IC tray
Demension	960mm(L)×705mm(W)×335mm(H)
Vision detection	Double camera (up & down)
Motor control	XY Axis stepper motor with encoder closed-loop control, never lose step
Components leakage detection	Z Axis origin detection; Vision detection; Vacuum detection
Main board	High-reliability industry motherboard
Touch Screen	7 inches industry LCD screen
Operation system	Embedded Linux system
Air pump	in-build 2 vacuum pump
Pull pin needle auto return	Yes, to avoid pull pin broke
Support software	PADS, Kicad, Eagle, Cadint, Cadence Orcad, Cadence Allegro, PROTEUS... etc
Power supply	AC220V 50Hz / AC110V 60Hz
Power	250W
Net weight	72Kg

## CHARMHIGH TECHNOLOGY LIMITED

5th floor Longshenggaoke Bd, Huangbao Rd(W), Tianxin District, Changsha, Hunan, China

Email: charmhigh@126.com ; Kimi@charmhigh-tech.com ; Mobile No: +86 135 106 75756 ; skype: kimiliu89